

Affaire

311

Saint-Julien 297

Plan

SCH20

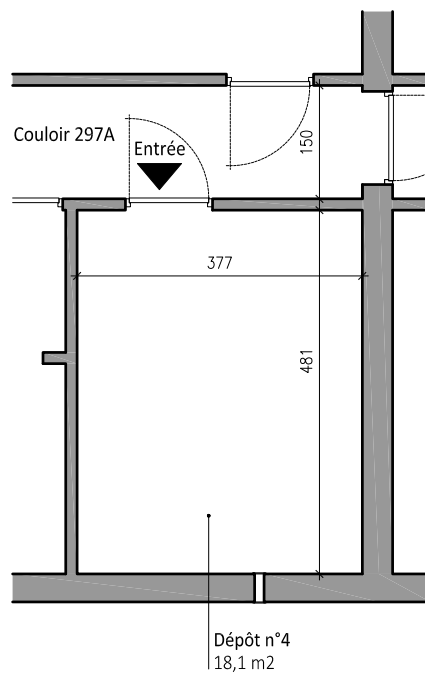
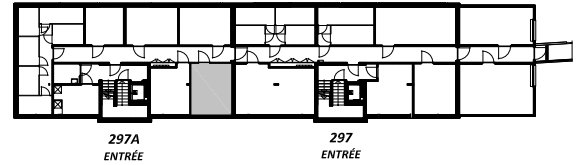
Construction de deux immeubles de logements

Route de Saint-Julien 297 & 297A - CH-1258 Perly - Parcelles n° 464 & 1822 - DD 111121

Echelle: 1-100


Date: 9.06.2022

Allée 297 A
Sous sol
Dépôt 4
Surface: 18,1 m²



Surfaces approximatives et plan non contractuel



 = 1 mètre